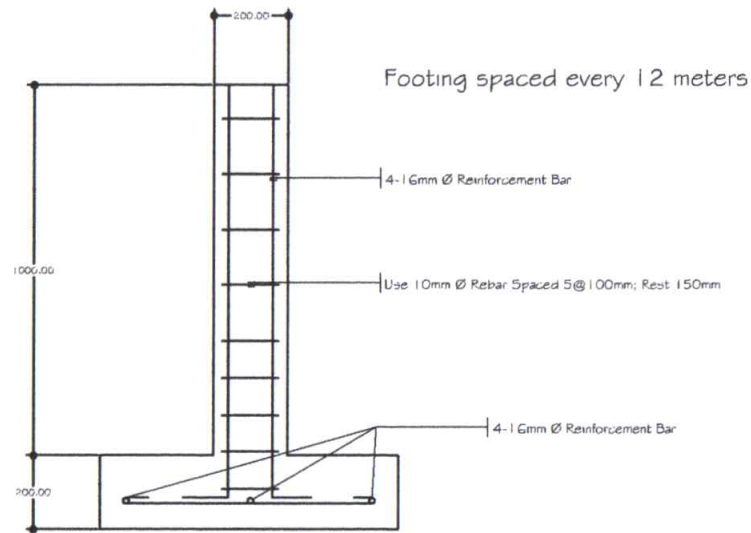


DETAIL A



Owner	Project and Location	Sheet Content:	Designed by:	Recommending Approval	Approved by:	Sheet No.
 TOMAS OPPUS	CROSS SECTIONAL PLAN San Isidro, Tomas Oppus, Southern Leyte	DETAILS	 ENGR. RALPH ANGELO LLOREN Campus Engineer	 JUDY O. PAZ, MM Supervising Administrative Officer, Designate	CLEMENTE H. COBILLA, Ph.D. Campus Director	S 1 1

